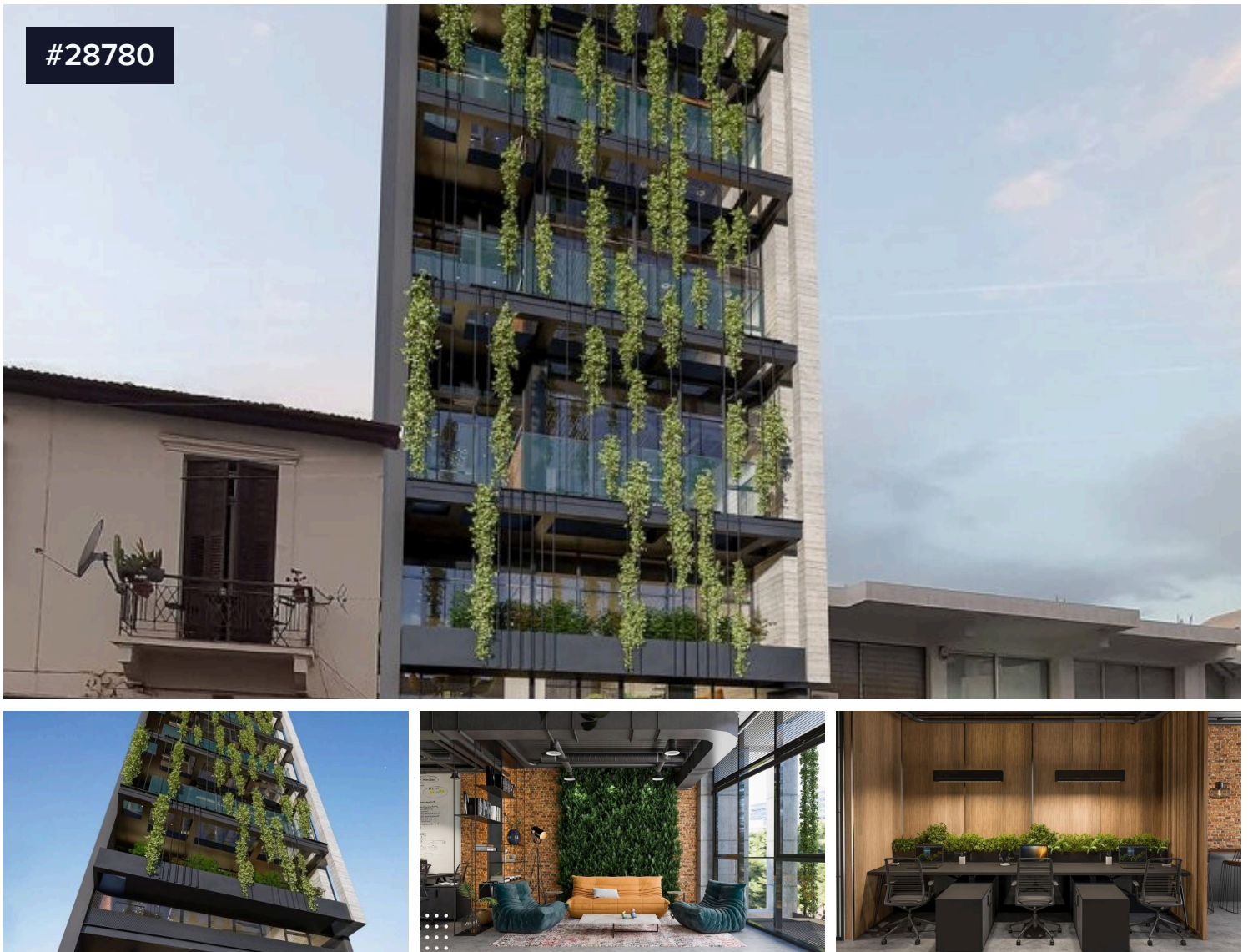


#28780



Beautiful contemporary building ,Limassol city center €2,800,000

📍 Limassol City Center, Limassol

Beautiful contemporary designed building located at one of the biggest commercial street at the heart of Limassol, with easy access to the high way and all amenities needed.

This unique building is equipped with all advanced technology provisions and has an impressive exterior. It also provides shell and core offices and common facilities include reception area and roof garden.

The building has been leased in its entirety for 15,000EUR monthly (or 180,000EUR per annum) for a period of 5 years (primary period) and the tenant has the option to renew the tenancy for an additional period of 5 years. Rent

Covered

 950 m²

Energy efficiency rating



Michalis Christodoulou

📞 (+357) 99448946

📧 louanpr@gmail.com

