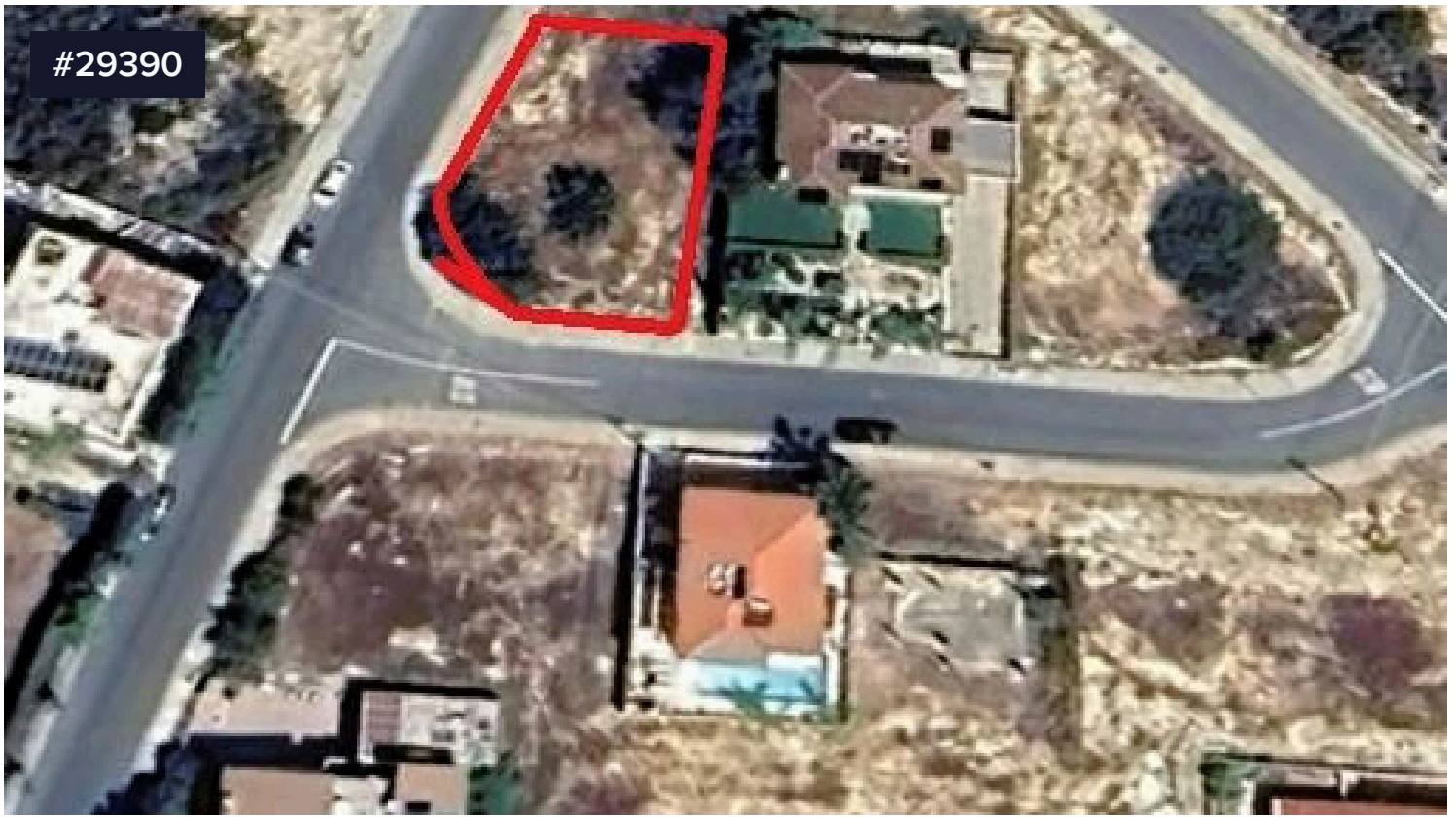


#29390



Corner residential plot , Agia Phyla

€295,000

📍 Agia Fyla, Limassol

Corner residential plot with total area 579sq.m. Agia Phyla, near all amenities and services with easy access to the highway and the city center.

Building Density: 80%

Coverage: 45%

Floors: 3

Height:13,5m

PRICE: 295,000 NO VAT

Area

📏 579 m²



Michalis Christodoulou

☎ (+357) 99448946

✉ louanpr@gmail.com

