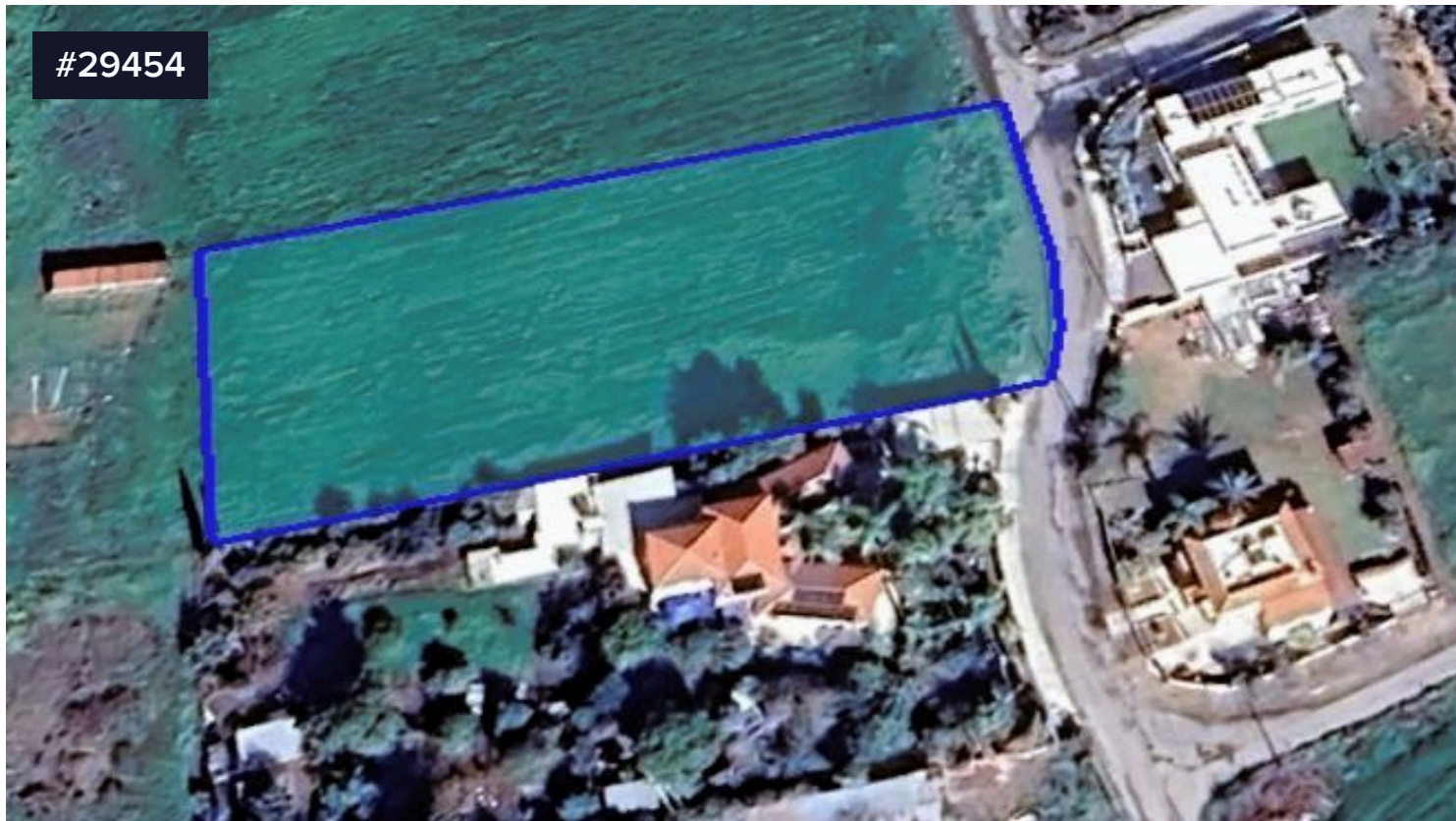


#29454



Residential Land , Ypsonas

€500,000

📍 Ypsonas, Limassol

Residential land with total area 3283sq.m. that falls into planning zone H4 , near all amenities and services with easy access to the highway and the city center.

Building Density : 40%

Coverage: 25%

Height: 8.3m

Floors:2

PRICE: 500,000

Area

📏 3283 m²



Nikos Christodoulou

☎ (+357) 95969547

📧 info@magicproperties.com.cy

