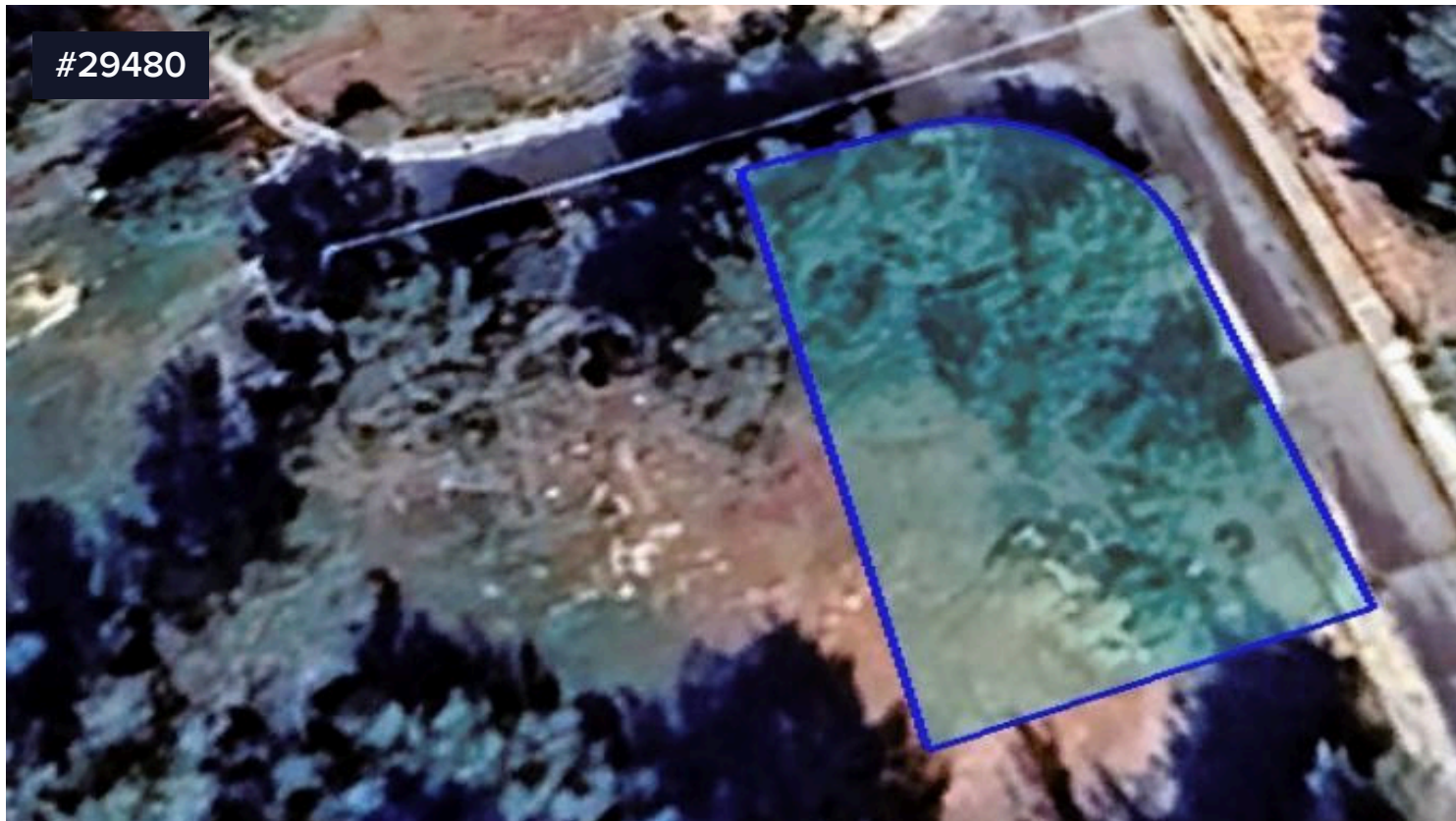


#29480



## Residential plot, Souni Zanakia

**€135,000** +VAT

📍 Souni, Limassol

Residential corner plot that falls into planning zone H6 with total area 625sq.m. at Souni near all amenities and services with easy access to the highway and the city center.

Building Density: 20%

Coverage: 20%

Floors: 2

Height: 8,3m

PRICE: 135,000

Area

📏 625 m<sup>2</sup>



**Nikos Christodoulou**

☎ (+357) 95969547

📧 info@magicproperties.com.cy