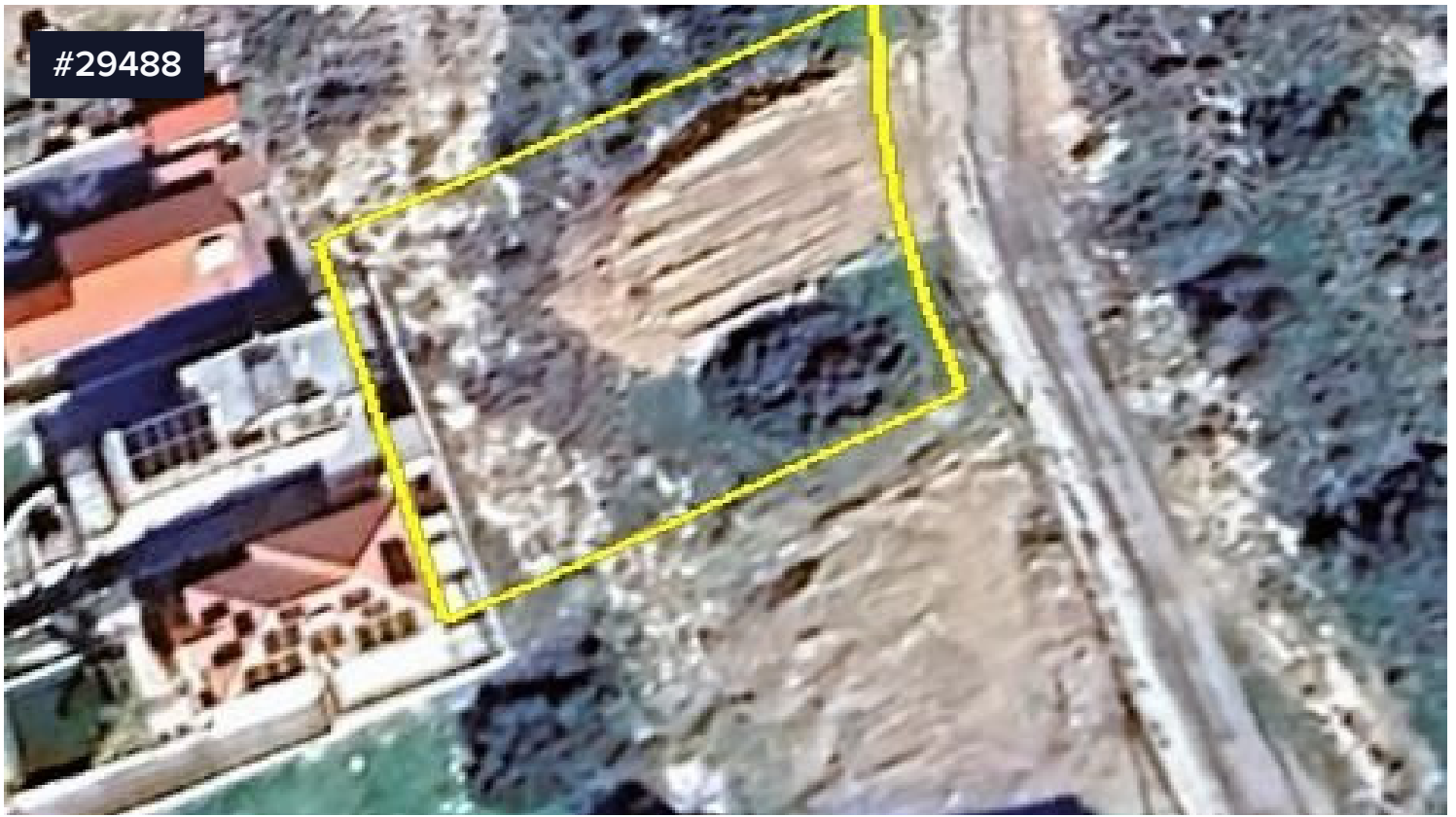


#29488



Residential plot, Erimi

€175,000

📍 Erimi, Limassol

Residential plot that falls into planning zone H3 with total area 930sq.m. near all amenities and services with easy access to the highway and the city center.

Building Density : 60%

Coverage: 35%

Floors: 2

PRICE: 175,000

Area

📏 930 m²



Nikos Christodoulou

☎ (+357) 95969547

✉ info@magicproperties.com.cy

