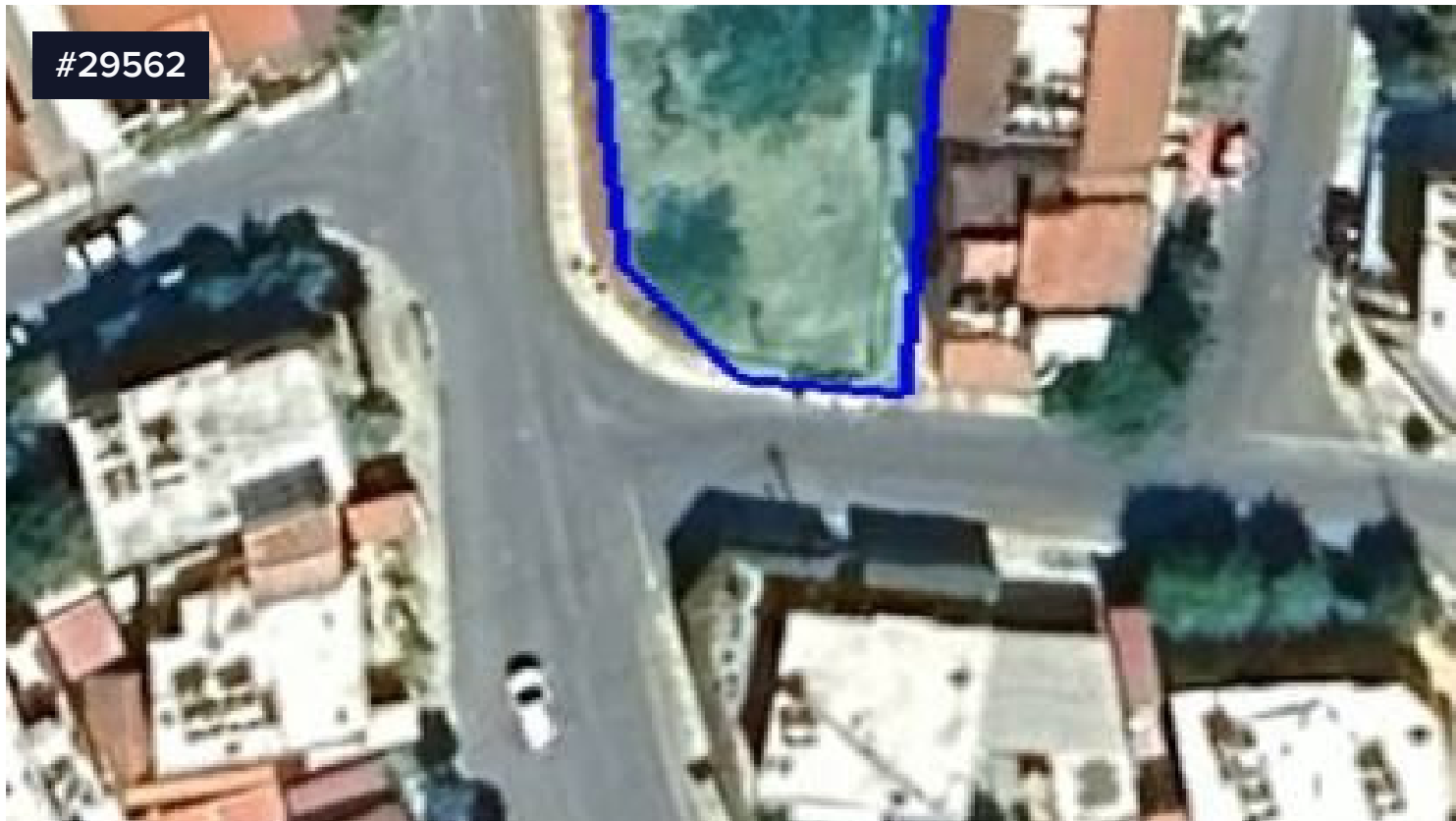


#29562



Residential plot, Apostolon Petrou kai Pavlou

€525,000

📍 Apostolou Petrou and Pavlou, Limassol

Residential plot with total area 531sq.m. Apostolon Petrou kai Pavlou near all amenities and services with easy access to the highway and the city center.

Building Density: 120%

Coverage: 50%

Floors:3

Height: 13,5m

PRICE: 525,000

Area

📏 531 m²



Nikos Christodoulou

☎ (+357) 95969547

📧 info@magicproperties.com.cy

