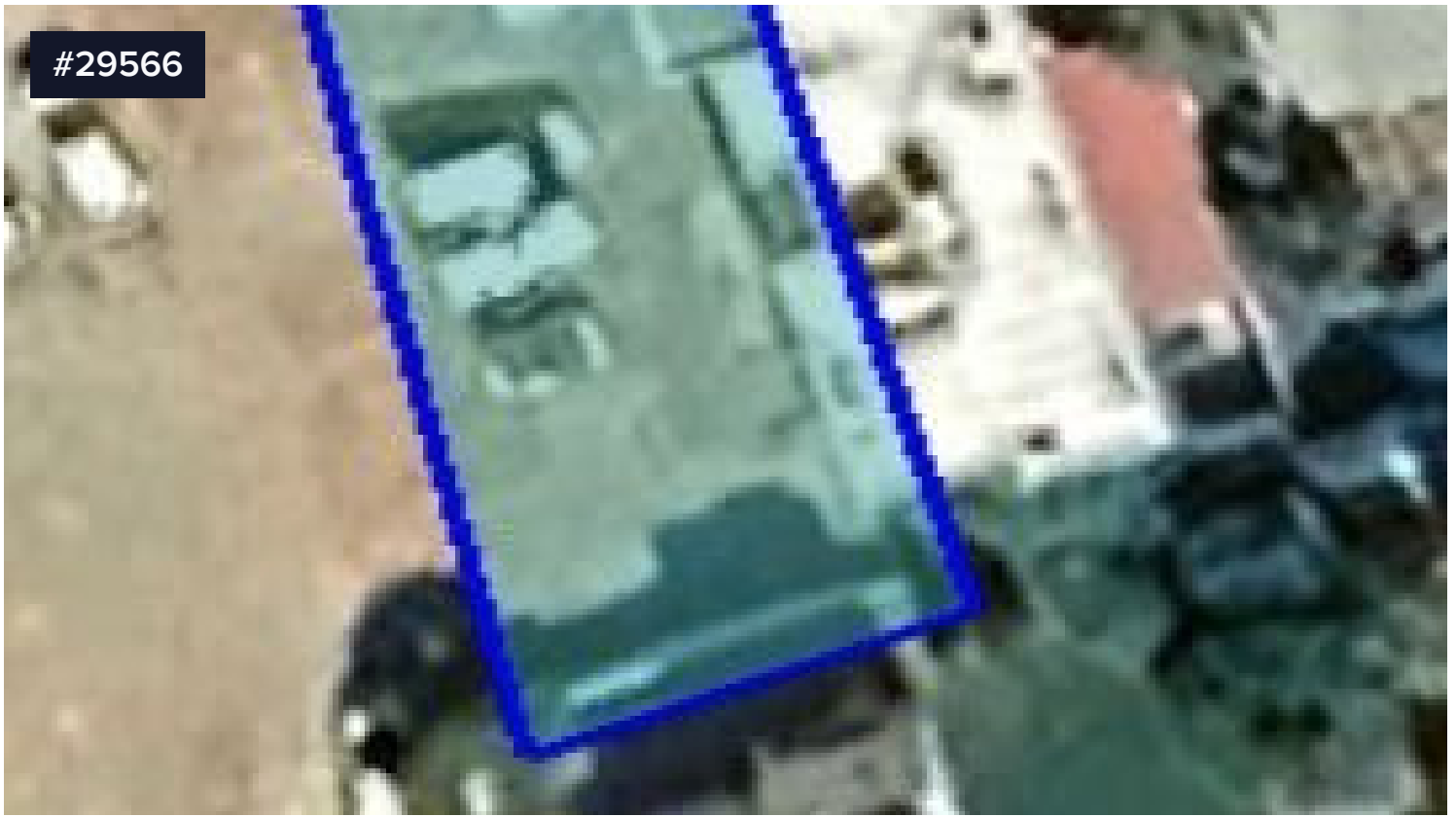


#29566



## Commercial plot, Apostolon Petrou kai Pavlou

€375,000

📍 Apostolou Petrou and Pavlou, Limassol

Commercial plot at a prime location with total area 268sq.m. Apostolon Petrou kai Pavlou near all amenities and services with easy access to the highway and the city center.

Building Density: 140%

Coverage: 50%

Height: 17m

Floors: 4

Price: 375,000

Area

📏 268 m<sup>2</sup>



**Nikos Christodoulou**

☎ (+357) 95969547

✉ info@magicproperties.com.cy

