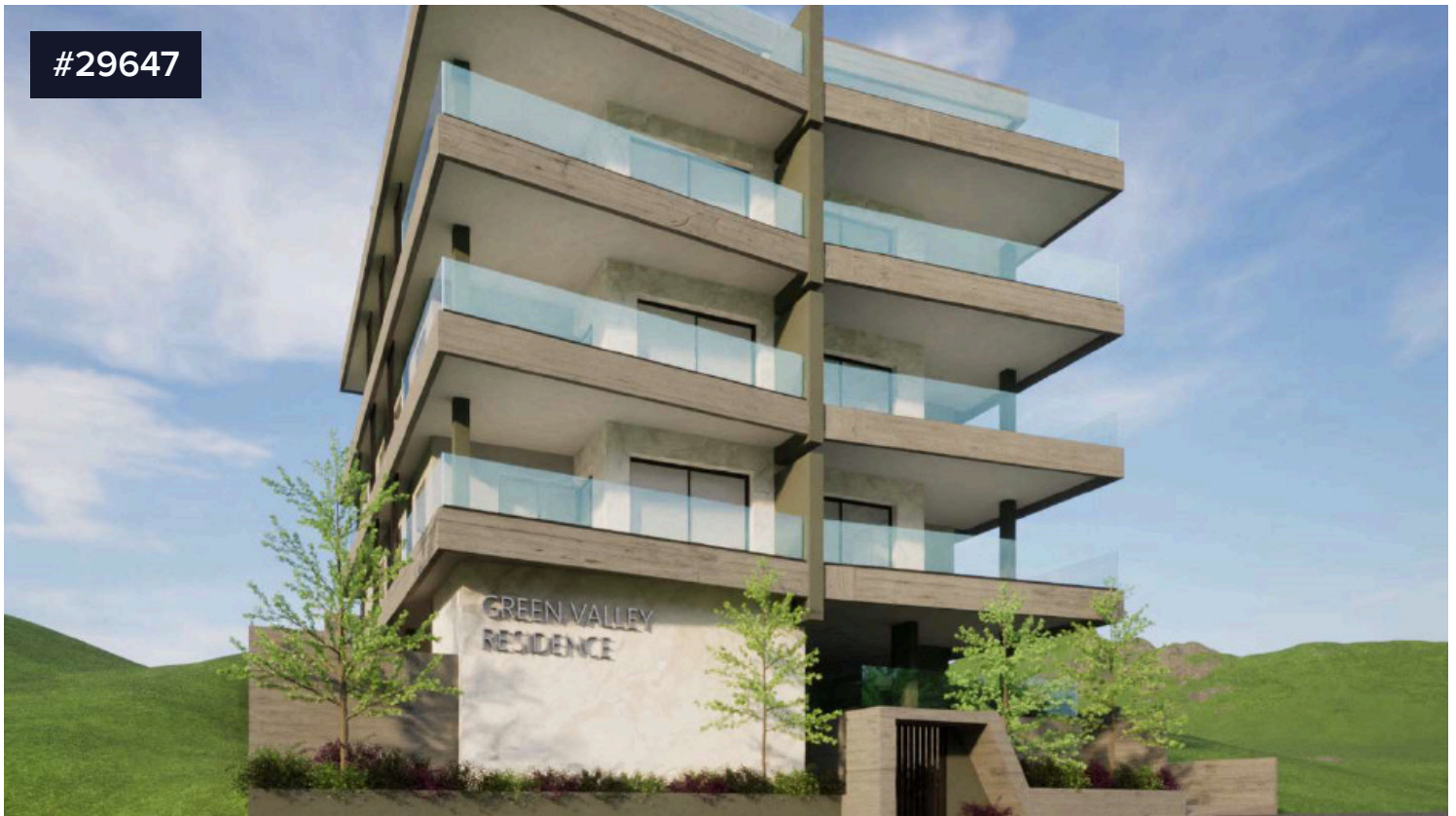


#29647



## 2 bedroom apartment, Panthea

€320,000 +VAT

 Panthea, Limassol

For sale: Modern two-bedroom apartment under construction in the sought-after area of Panthea. With a generous internal space of 84 m<sup>2</sup>, this property is thoughtfully designed to offer comfort and style. It features two spacious bedrooms, two contemporary bathrooms, and is positioned on the second floor of a three-storey building.

Panthea is known for its peaceful residential atmosphere, beautifully elevated location, and stunning views. The area combines tranquility with convenience, as it is close to schools, supermarkets, and quick access to the main road network, making daily life easy and hassle-free.

The apartment enjoys a southwest facing aspect, filling the interiors with natural light throughout the day. Energy efficiency class A ensures low running costs and a sustainable lifestyle. Built with modern materials and finishings, this home is perfect for those seeking both quality and functionality.

Set for completion in 2026, this apartment is an excellent choice for homeowners or investors. This opportunity is proudly presented by Magic Properties. Contact us to arrange more information or a viewing today.

Bedrooms

 2

Bathrooms

 2

Covered

 84 m<sup>2</sup>

Energy efficiency rating

 A



**Nicos Theodoulou**

 (+357) 99479311

 nicostheodoulou@hotmail.com

