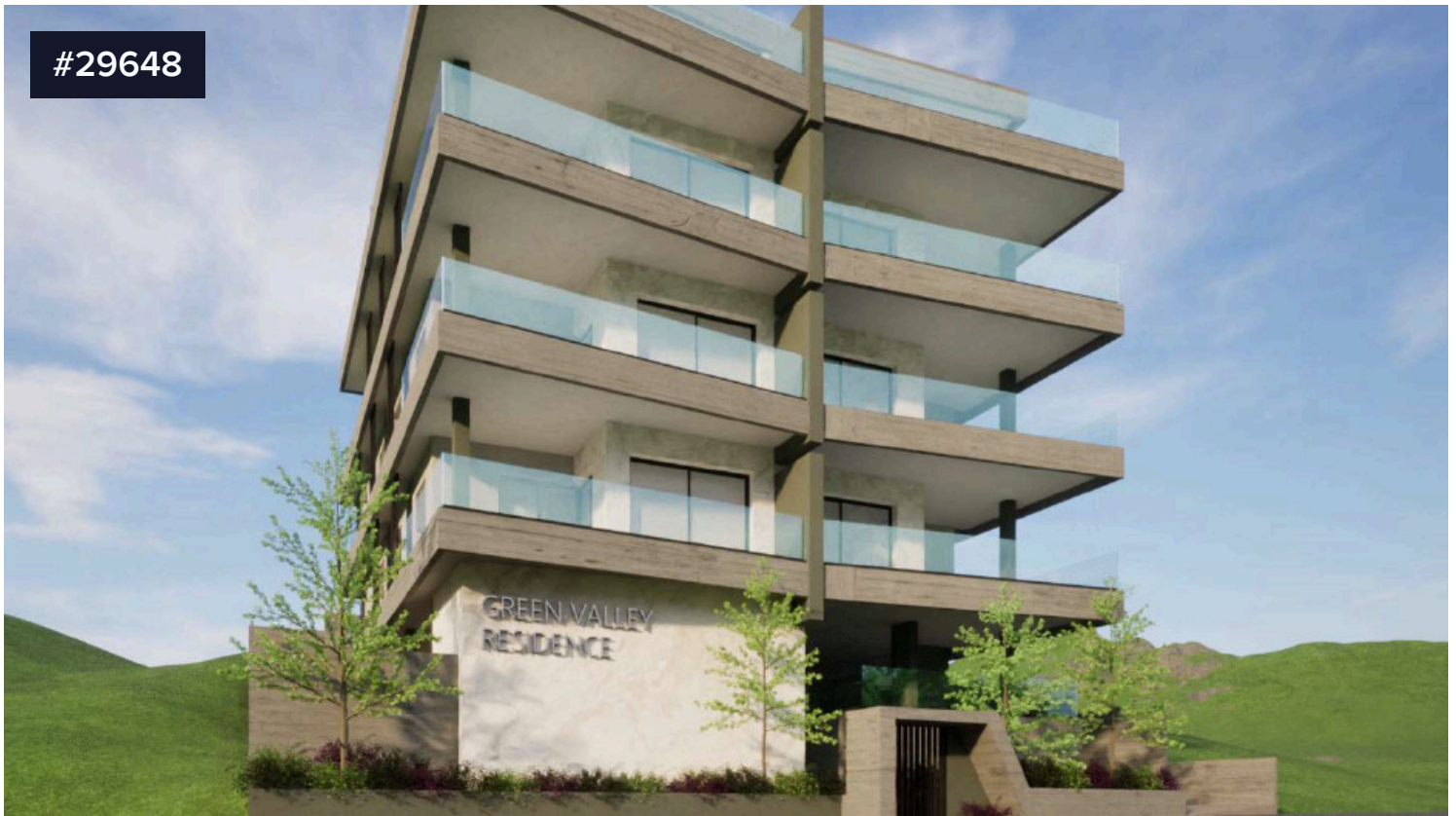


#29648



1 bedroom apartment, Panthea

€210,000 +VAT

📍 Panthea, Limassol

For sale: A modern, under-construction apartment offering comfortable living in the sought-after area of Panthea. With a well-planned internal space of 52 square meters, this one-bedroom, one-bathroom apartment is located on the 2nd floor of a three-story building projected for completion in 2026.

The property features a bright, southwest-facing layout, allowing for plenty of natural sunlight throughout the day. The open-plan living area is designed to maximize space and comfort, ideal for singles or couples searching for a stylish new home. High-quality materials and contemporary finishes ensure a sleek and modern feel in every room.

Panthea is a quiet residential neighborhood well-known for its peaceful surroundings and convenient access to city amenities. The area boasts a blend of green spaces and urban development, offering a relaxed yet connected lifestyle. Residents benefit from easy access to the highway, making commuting to the city center or surrounding areas simple and efficient.

This apartment is an excellent opportunity for first-time buyers or investors seeking a new property in a rapidly

Bedrooms



Bathrooms



Covered

52 m²



Nicos Theodoulou

📞 (+357) 99479311

✉ nicostheodoulou@hotmail.com

