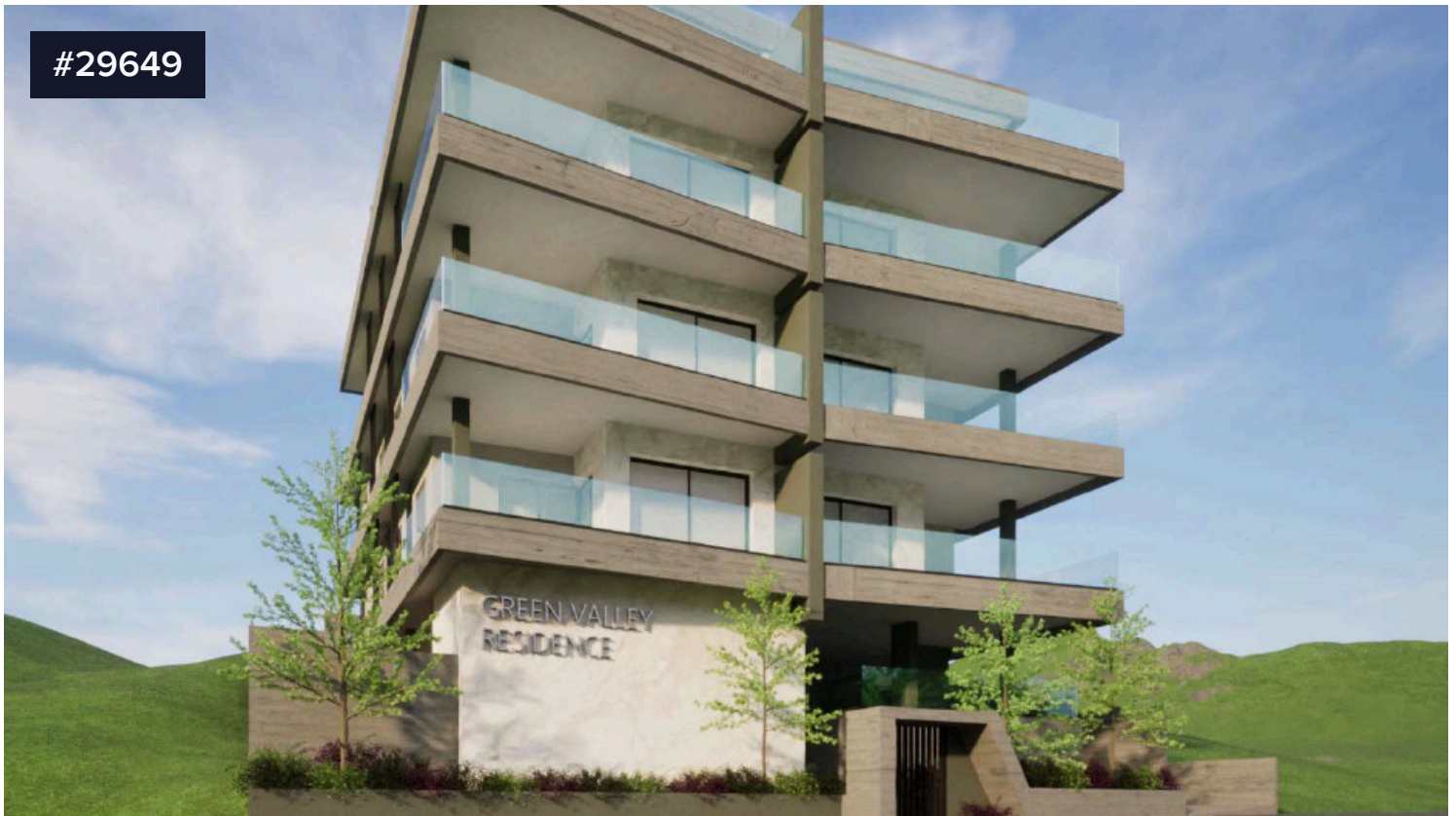


#29649



3 bedroom penthouse, Panthea

€460,000 +VAT

 Panthea, Limassol

For sale: A modern penthouse apartment under construction, located in the popular area of Panthea. This spacious residence offers an internal area of 107 m², providing an excellent layout with three comfortable bedrooms and two well-appointed bathrooms. Boasting an energy efficiency A rating, the apartment is designed to ensure maximum comfort and lower utility costs.

The property features a bright, open-plan living space with a south west orientation, allowing for plenty of natural light and beautiful sunset views. Sleek, modern finishes are included throughout, reflecting the latest in design trends. The penthouse setting provides added privacy and lovely city and sea views.

Panthea is known for its peaceful residential atmosphere, offering a perfect blend of quiet living while being conveniently close to the highway for easy commuting. The area is popular with families and professionals, with nearby schools, parks, and amenities enhancing daily life.

This is a unique opportunity to own a brand-new home in one of the most sought-after areas. Completion is expected

Bedrooms

 3

Bathrooms

 2

Covered

 107 m²

Energy efficiency rating

 A



Nicos Theodoulou

 (+357) 99479311

 nicostheodoulou@hotmail.com

