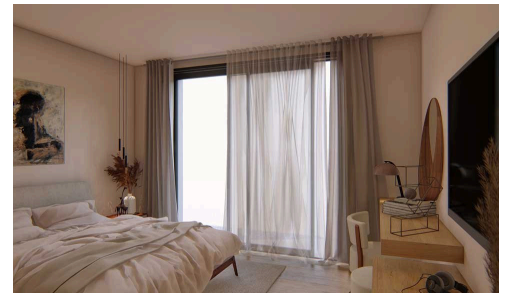
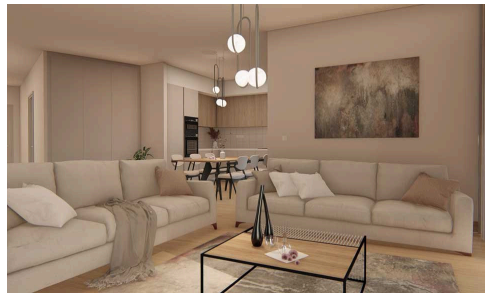
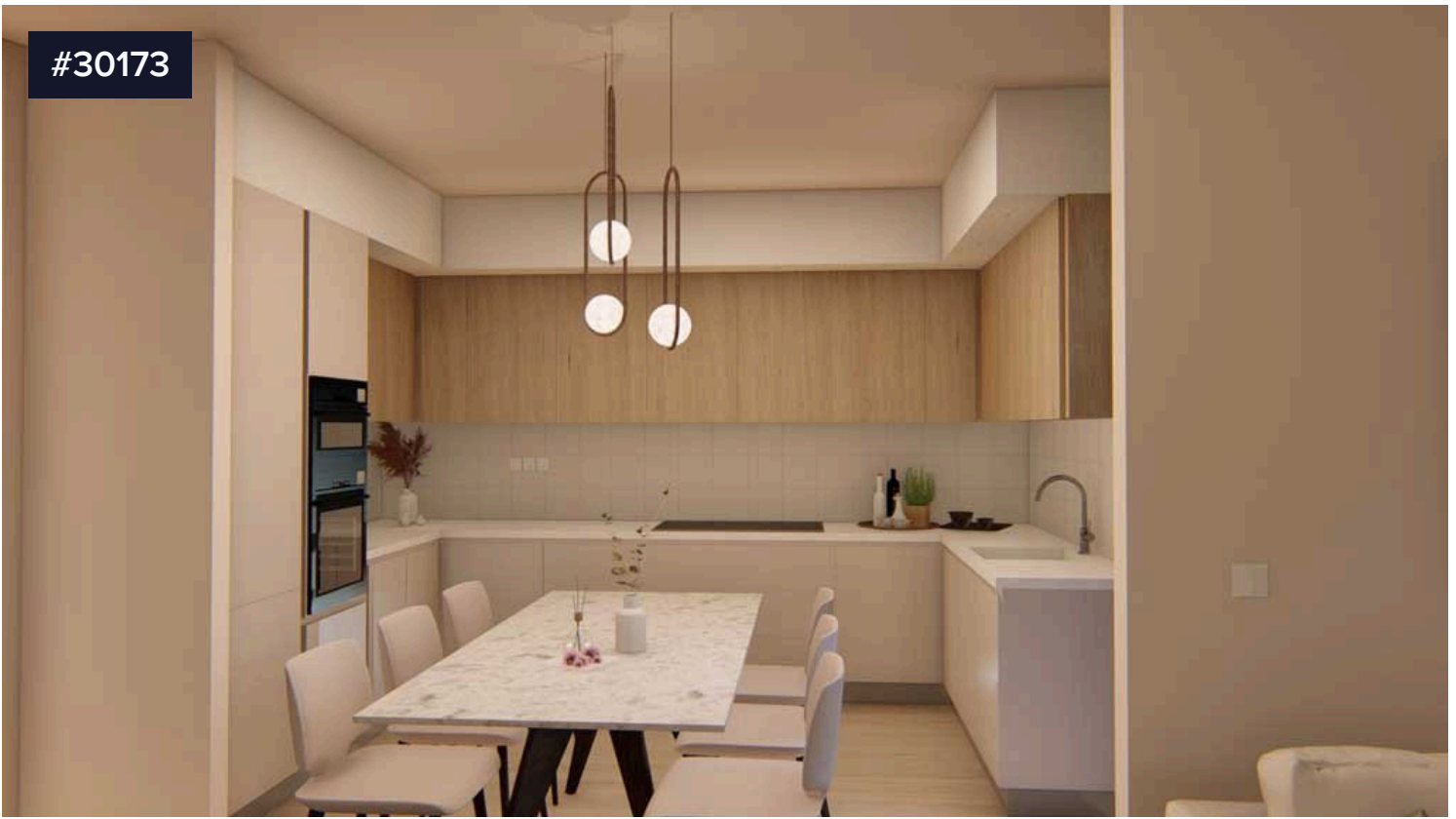


#30173



**€428,000** +VAT

Nest is a contemporary residential development designed to offer a calm, comfortable and well-balanced living experience in one of Limassol's most desirable districts. The architectural concept focuses on clean lines, naturally lit interiors and generous covered verandas that extend everyday living into the outdoors. Many apartments enjoy beautiful open views towards the city and the sea, enhancing the feeling of space and serenity. The development offers a selection of 1-, 2- and 3-bedroom apartments, planned with efficient interior layouts and quality finishing materials.

Bedrooms



2

Bathrooms



2

Covered

**83.15 m<sup>2</sup>**

Energy efficiency rating



A



**Nicos Theodoulou**

☎ (+357) 99479311

📧 sales1@magicproperties.com.cy

